

**Uni Ricoh 3502 OEM Chip
Reset Operating Instruction
V1.0**

Contents

1. Features2

2. Ricoh 3502 Series Blank Chip and JIG.....2

3. Operating Procedure2

4. Notices3

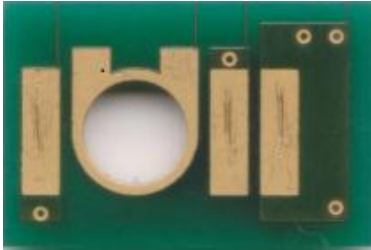
5. Code Hinting and Meanings4

6. Model List4

1. Features

Only reset to the exact model without changing the color, yield and region.

2. Ricoh 3502 Series Chip and JIG



Chip



JIG

3. Operating Procedure

OEM Reset & OEM Check & OEM SCAN

Ensure the test head is contacted with the chip correctly.


Click  in the main interface to scan chips.



Figure 1



Figure 2

After the chip is successfully scanned, you can enter into the final operation interface. Click to switch functions "RESET", "CHECH" and "SCAN", and press the "Confirm" button on the JIG or Unismart device to carry out the chip operation.

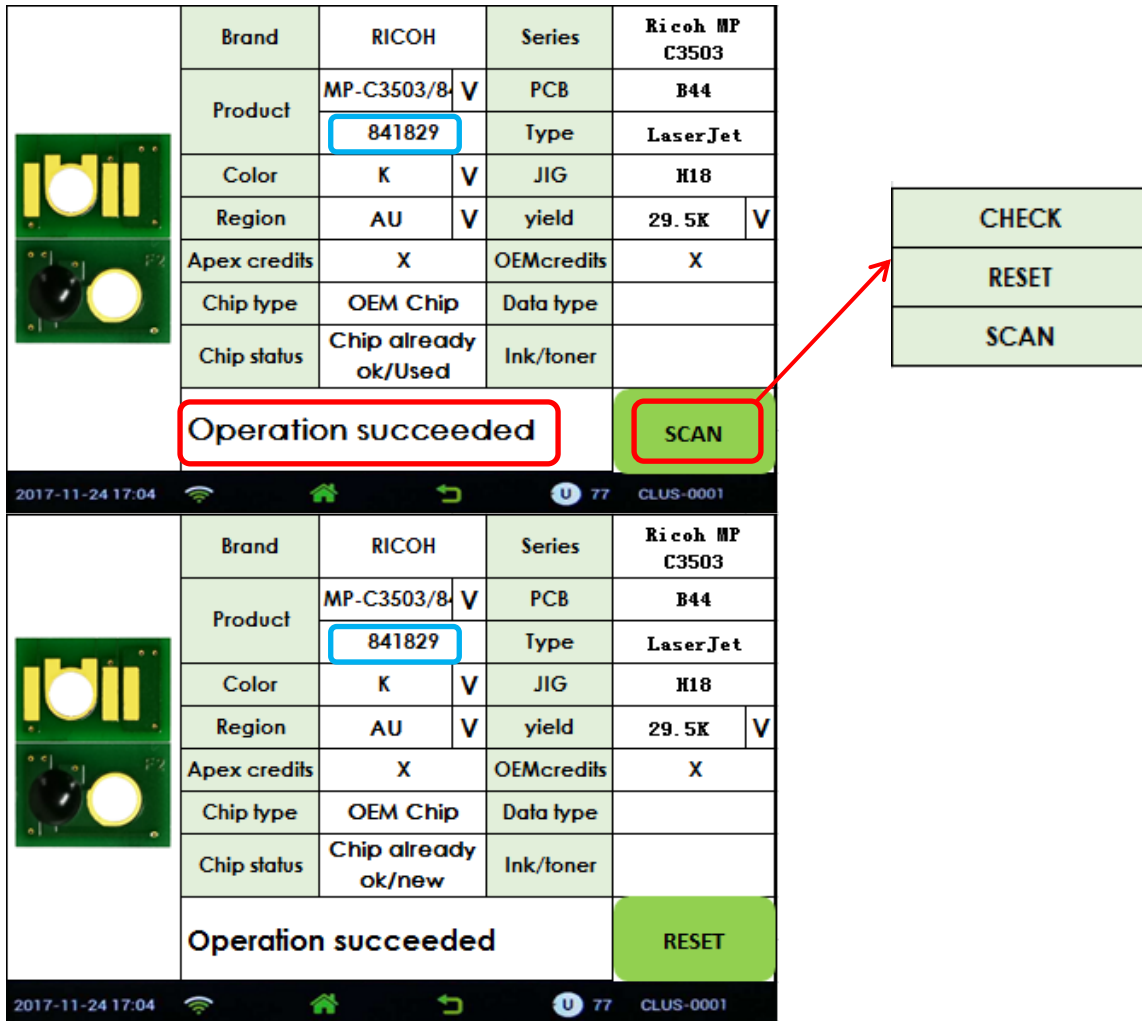


Figure 3

Notes:

- ◆ Using button to scan and check the chip information can only be realized in the main interface and final interface.
- ◆ The operation procedure above is for MP-C3503 reset and it can also be applied to other PCB.

4. Notices

- ◆ Due to the massive models in different region for Ricoh 3502 series products, we haven't covered all the involved models in the recycled cartridges. In this case, for these uncovered models using with Scan or Reset functions, the Unismart may not display the specific color, region and yield but only shows "RST-Ricoh-3502". However, it can be used normally after chips are reset, please refer to the blue square OEM code as below picture for installation and test.

- ◆ The Unismart resets the yield in the original chip models without changing the Serial Number. After doing tests, we found that the printer only memories one set Serial Number, but it can be rewritten by installing a new set cartridges. Only the end-user has at least 2 sets cartridges that can reset the chips with the device for this series products.



5. Code Hinting and Meanings

Coding Hinting	Meaning	Analysis
Chip Already OK	Chip Already OK	/
Operation failed	Operation failed	①The chip is damaged. ②The JIG's probe does not align the contactors on the chip. ③The JIG is placed in the opposite direction.
Operation succeeded	Operation succeeded	/
Chip not match	Chip doesn't match	The chip that needs to be reset cannot select the current model.
Data not match	Data not match	①The chip is installed and its data is rewritten by the

OEM Chip Reset Operating Instruction



		printer. ②The detected chip model doesn't match with the selected model on the Unismart device.
Chip is locked	Chip is locked	/
Chip's useful life is over	Chip's useful life is over	/
Brand new chip	Brand new chip	/
No chip detected	No chip detected	/
Wrong JIG ID	Wrong JIG ID	/
Not found JIG	Not found JIG	/

6. Model List

PCB code	Jig	Brand	Apex Product Code	OEM Product Code	Color	Yield	Region	For Use with
PCB-B44	H18	RICOH	ALR-C2503HK-AU	MP-C2503/841932	BK	15K	AU	Ricoh MP C2003/MP C2503/ MP C2004/MP C2504
PCB-B44	H18	RICOH	ALR-C2503HC-AU	MP-C2503H/841935	C	9.5K		
PCB-B44	H18	RICOH	ALR-C2503HM-AU	MP-C2503H/841934	M	9.5K		
PCB-B44	H18	RICOH	ALR-C2503HY-AU	MP-C2503H/841933	Y	9.5K		
PCB-B44	H18	RICOH	ALR-C2503HK-EU R	MP-C2503/841925	BK	15K	EUR	
PCB-B44	H18	RICOH	ALR-C2503HC-EU R	MP-C2503H/841928	C	9.5K		
PCB-B44	H18	RICOH	ALR-C2503HM-EU R	MP-C2503H/841927	M	9.5K		
PCB-B44	H18	RICOH	ALR-C2503HY-EU R	MP-C2503H/841926	Y	9.5K		
PCB-B44	H18	RICOH	ALR-C2503HK-NA	MP-C2503/841918	BK	15K	NA	
PCB-B44	H18	RICOH	ALR-C2503HC-NA	MP-C2503H/841921	C	9.5K		
PCB-B44	H18	RICOH	ALR-C2503HM-NA	MP-C2503H/841920	M	9.5K		
PCB-B44	H18	RICOH	ALR-C2503HY-NA	MP-C2503H/841919	Y	9.5K		
PCB-B44	H18	RICOH	ALR-C2503HK-CH N	MP-C2503/841946	BK	15K	CHN	
PCB-B44	H18	RICOH	ALR-C2503C-JP	MP-C2503/600284	C	5.5K	JP	
PCB-B44	H18	RICOH	ALR-C2503M-JP	MP-C2503/600283	M	5.5K		
PCB-B44	H18	RICOH	ALR-C2503Y-JP	MP-C2503/600282	Y	5.5K		
PCB-B44	H18	RICOH	ALR-C2503C-NA	MP-C2503/841924	C	5.5K	NA	
PCB-B44	H18	RICOH	ALR-C2503M-NA	MP-C2503/841923	M	5.5K		
PCB-B44	H18	RICOH	ALR-C2503Y-NA	MP-C2503/841922	Y	5.5K		
PCB-B44	H18	RICOH	ALR-C3503K-AU	MP-C3503/841829	BK	29.5K	AU	
PCB-B44	H18	RICOH	ALR-C3503C-AU	MP-C3503/841832	C	18K		
PCB-B44	H18	RICOH	ALR-C3503M-AU	MP-C3503/841831	M	18K		
PCB-B44	H18	RICOH	ALR-C3503Y-AU	MP-C3503/841830	Y	18K		
PCB-B44	H18	RICOH	ALR-C3503K-CHN	MP-C3503/841841	BK	29.5K	CHN	
PCB-B44	H18	RICOH	ALR-C3503C-CHN	MP-C3503/841844	C	18K		

OEM Chip Reset Operating Instruction



PCB-B44	H18	RICOH	ALR-C3503M-CHN	MP-C3503/841843	M	18K	EUR	Ricoh MP C5503/MP C4503/ MP C6003/MP C4504/ MP C5504/MP C6004	
PCB-B44	H18	RICOH	ALR-C3503Y-CHN	MP-C3503/841842	Y	18K			
PCB-B44	H18	RICOH	ALR-C3503K-EUR	MP-C3503/841817	BK	29.5K			
PCB-B44	H18	RICOH	ALR-C3503C-EUR	MP-C3503/841820	C	18K			
PCB-B44	H18	RICOH	ALR-C3503M-EUR	MP-C3503/841819	M	18K			
PCB-B44	H18	RICOH	ALR-C3503Y-EUR	MP-C3503/841818	Y	18K			
PCB-B44	H18	RICOH	ALR-C3503K-JP	MP-C3503/600249	BK	29.5K			JP
PCB-B44	H18	RICOH	ALR-C3503C-JP	MP-C3503/600252	C	18K			
PCB-B44	H18	RICOH	ALR-C3503M-JP	MP-C3503/600251	M	18K			
PCB-B44	H18	RICOH	ALR-C3503Y-JP	MP-C3503/600250	Y	18K			
PCB-B44	H18	RICOH	ALR-C3503K-NA	MP-C3503/841813	BK	29.5K			NA
PCB-B44	H18	RICOH	ALR-C3503C-NA	MP-C3503/841816	C	18K			
PCB-B44	H18	RICOH	ALR-C3503M-NA	MP-C3503/841815	M	18K			
PCB-B44	H18	RICOH	ALR-C3503Y-NA	MP-C3503/841814	Y	18K			
PCB-B44	H18	RICOH	ALR-C6003K-AU	MP-C6003/841865	BK	33K	AU		
PCB-B44	H18	RICOH	ALR-C6003C-AU	MP-C6003/841868	C	22.5K			
PCB-B44	H18	RICOH	ALR-C6003M-AU	MP-C6003/841867	M	22.5K			
PCB-B44	H18	RICOH	ALR-C6003Y-AU	MP-C6003/841866	Y	22.5K			
PCB-B44	H18	RICOH	ALR-C6003K-CHN	MP-C6003/841877	BK	33K	CHN		
PCB-B44	H18	RICOH	ALR-C6003C-CHN	MP-C6003/841880	C	22.5K			
PCB-B44	H18	RICOH	ALR-C6003M-CHN	MP-C6003/841879	M	22.5K			
PCB-B44	H18	RICOH	ALR-C6003Y-CHN	MP-C6003/841878	Y	22.5K			
PCB-B44	H18	RICOH	ALR-C6003K-EUR	MP-C6003/841853	BK	33K	EUR		
PCB-B44	H18	RICOH	ALR-C6003C-EUR	MP-C6003/841856	C	22.5K			
PCB-B44	H18	RICOH	ALR-C6003M-EUR	MP-C6003/841855	M	22.5K			
PCB-B44	H18	RICOH	ALR-C6003Y-EUR	MP-C6003/841854	Y	22.5K			
PCB-B44	H18	RICOH	ALR-C6003K-NA	MP-C6003/841849	BK	33K	NA		
PCB-B44	H18	RICOH	ALR-C6003C-NA	MP-C6003/841852	C	22.5K			
PCB-B44	H18	RICOH	ALR-C6003M-NA	MP-C6003/841851	M	22.5K			
PCB-B44	H18	RICOH	ALR-C6003Y-NA	MP-C6003/841850	Y	22.5K			
PCB-B44	H18	RICOH	ALR-C6003K-JP	MP-C6003/600244	BK	33K	JP		
PCB-B44	H18	RICOH	ALR-C6003C-JP	MP-C6003/600245	C	22.5K			
PCB-B44	H18	RICOH	ALR-C6003M-JP	MP-C6003/600246	M	22.5K			
PCB-B44	H18	RICOH	ALR-C6003Y-JP	MP-C6003/600247	Y	22.5K			
PCB-B44	H18	RICOH	ALR-C406K-CHN	MP-C406/842111	BK	17K	CHN		
PCB-B44	H18	RICOH	ALR-C406C-CHN	MP-C406/842112	C	6K			
PCB-B44	H18	RICOH	ALR-C406M-CHN	MP-C406/842113	M	6K			
PCB-B44	H18	RICOH	ALR-C406Y-CHN	MP-C406/842114	Y	6K			
PCB-B44	H18	RICOH	ALR-C406K-EUR	MP-C406/842095	BK	17K	EUR		
PCB-B44	H18	RICOH	ALR-C406C-EUR	MP-C406/842096	C	6K			
PCB-B44	H18	RICOH	ALR-C406M-EUR	MP-C406/842097	M	6K			
PCB-B44	H18	RICOH	ALR-C406Y-EUR	MP-C406/842098	Y	6K			
PCB-B44	H18	RICOH	ALR-C406K-NA	MP-C406/842091	BK	17K	NA		
PCB-B44	H18	RICOH	ALR-C406C-NA	MP-C406/842092	C	6K			

OEM Chip Reset Operating Instruction



PCB-B44	H18	RICOH	ALR-C406M-NA	MP-C406/842093	M	6K	JP	
PCB-B44	H18	RICOH	ALR-C406Y-NA	MP-C406/842094	Y	6K		
PCB-B44	H18	RICOH	ALR-C406K-JP	MP-C406/600342	BK	17K		
PCB-B44	H18	RICOH	ALR-C406C-JP	MP-C406/600343	C	6K		
PCB-B44	H18	RICOH	ALR-C406M-JP	MP-C406/600344	M	6K		
PCB-B44	H18	RICOH	ALR-C406Y-JP	MP-C406/600345	Y	6K		
PCB-B44	H18	RICOH	ALR-C407K-NA	MP-C407/842207	BK	17.5K	WW	Ricoh MP C407SPF
PCB-B44	H18	RICOH	ALR-C407C-NA	MP-C407/842208	C	8K		
PCB-B44	H18	RICOH	ALR-C407M-NA	MP-C407/842209	M	8K		
PCB-B44	H18	RICOH	ALR-C407Y-NA	MP-C407/842210	Y	8K		
PCB-B44	H18	RICOH	ALR-C840HK-JP	SP-C840H/600637	BK	25K	JP	Ricoh SP C841/C841M/C840/C840M
PCB-B44	H18	RICOH	ALR-C840HC-JP	SP-C840H/600634	C	20K		
PCB-B44	H18	RICOH	ALR-C840HM-JP	SP-C840H/600635	M	20K		
PCB-B44	H18	RICOH	ALR-C840HY-JP	SP-C840H/600636	Y	20K		
PCB-B44	H18	RICOH	ALR-C840AK-JP	SP-C840A/821255	BK	43K	WW (ex.JP)	Ricoh SP C840DN/SP C842DN
PCB-B44	H18	RICOH	ALR-C840AC-JP	SP-C840A/821258	C	34K		
PCB-B44	H18	RICOH	ALR-C840AM-JP	SP-C840A/821257	M	34K		
PCB-B44	H18	RICOH	ALR-C840AY-JP	SP-C840A/821256	Y	34K		
PCB-B44	H18	RICOH	ALR-C840K-JP	SP-C840/600633	BK	12K	JP	Ricoh SP C841/C841M/C840/C840M
PCB-B44	H18	RICOH	ALR-C840C-JP	SP-C840/600630	C	12K		
PCB-B44	H18	RICOH	ALR-C840M-JP	SP-C840/600631	M	12K		
PCB-B44	H18	RICOH	ALR-C840Y-JP	SP-C840/600632	Y	12K		
PCB-B44	H18	RICOH	ALR-C830HK-NA	SP-C830H/821181	BK	23.5K	WW (ex.JP)	
PCB-B44	H18	RICOH	ALR-C830HC-NA	SP-C830H/821184	C	27K		
PCB-B44	H18	RICOH	ALR-C830HM-NA	SP-C830H/821183	M	27K		
PCB-B44	H18	RICOH	ALR-C830HY-NA	SP-C830H/821182	Y	27K		
PCB-B44	H18	RICOH	ALR-C830HK-JP	SP-C830H/600514	BK	25K	JP	Ricoh IPSiO SP C831/831M/C830/830M
PCB-B44	H18	RICOH	ALR-C830HC-JP	SP-C830H/600517	C	20K		
PCB-B44	H18	RICOH	ALR-C830HM-JP	SP-C830H/600516	M	20K		
PCB-B44	H18	RICOH	ALR-C830HY-JP	SP-C830H/600515	Y	20K		
PCB-B44	H18	RICOH	ALR-C830K-JP	SP-C830/600518	BK	12K		
PCB-B44	H18	RICOH	ALR-C830C-JP	SP-C830/600521	C	12K		
PCB-B44	H18	RICOH	ALR-C830M-JP	SP-C830/600520	M	12K		
PCB-B44	H18	RICOH	ALR-C830Y-JP	SP-C830/600519	Y	12K		
PCB-B44	H18	RICOH	ALR-C830K-NA	SP-C830/821149	BK	12K	WW ex.JP)	
PCB-B44	H18	RICOH	ALR-C830C-NA	SP-C830/821152	C	12K		
PCB-B44	H18	RICOH	ALR-C830M-NA	SP-C830/821151	M	12K		
PCB-B44	H18	RICOH	ALR-C830Y-NA	SP-C830/821150	Y	12K		
PCB-B44	H18	RICOH	ALR-C305HK-CHN	MP-C305H/841633	BK	12K	CHN	Ricoh Aficio MP C305spf
PCB-B44	H18	RICOH	ALR-C305HC-CHN	MP-C305H/841625	C	4K		
PCB-B44	H18	RICOH	ALR-C305HM-CHN	MP-C305H/841626	M	4K		
PCB-B44	H18	RICOH	ALR-C305HY-CHN	MP-C305H/841627	Y	4K		
PCB-B44	H18	RICOH	ALR-C305HK-EUR	MP-C305H/842079	BK	12K	EUR	
PCB-B44	H18	RICOH	ALR-C305HC-EUR	MP-C305H/842082	C	4K		

OEM Chip Reset Operating Instruction



PCB-B44	H18	RICOH	ALR-C305HM-EUR	MP-C305H/842081	M	4K	NA	
PCB-B44	H18	RICOH	ALR-C305HY-EUR	MP-C305H/841627	Y	4K		
PCB-B44	H18	RICOH	ALR-C305HK-NA	MP-C305H/842119	BK	12K		
PCB-B44	H18	RICOH	ALR-C305HC-NA	MP-C305H/841122	C	4K		
PCB-B44	H18	RICOH	ALR-C305HM-NA	MP-C305H/841121	M	4K		
PCB-B44	H18	RICOH	ALR-C305HY-NA	MP-C305H/841120	Y	4K		
PCB-B44	H18	RICOH	ALR-C305HK-JP	MP-C305H/600273	BK	12K	JP	
PCB-B44	H18	RICOH	ALR-C305HC-JP	MP-C305H/600274	C	4K		
PCB-B44	H18	RICOH	ALR-C305HM-JP	MP-C305H/600275	M	4K		
PCB-B44	H18	RICOH	ALR-C305HY-JP	MP-C305H/600276	Y	4K		
PCB-B44	H18	RICOH	ALR-1803K-JP	MP-C1803/600286	BK	3K	JP	Ricoh MP C1803
PCB-B44	H18	RICOH	ALR-1803C-JP	MP-C1803/600287	C	1.4K		
PCB-B44	H18	RICOH	ALR-1803M-JP	MP-C1803/600288	M	1.4K		
PCB-B44	H18	RICOH	ALR-1803Y-JP	MP-C1803/600289	Y	1.4K		
PCB-B44	H18	RICOH	ALR-C3502K-CHN	MP-C3502/841675	BK	28K	CHN	
PCB-B44	H18	RICOH	ALR-C3502C-CHN	MP-C3502/841678	C	18K		
PCB-B44	H18	RICOH	ALR-C3502M-CHN	MP-C3502/841677	M	18K		
PCB-B44	H18	RICOH	ALR-C3502Y-CHN	MP-C3502/841676	Y	18K		
PCB-B44	H18	RICOH	ALR-C3502K-NA	MP-C3502/841735	BK	28K	NA	
PCB-B44	H18	RICOH	ALR-C3502C-NA	MP-C3502/841738	C	18K		
PCB-B44	H18	RICOH	ALR-C3502M-NA	MP-C3502/841737	M	18K		
PCB-B44	H18	RICOH	ALR-C3502Y-NA	MP-C3502/841736	Y	18K		
PCB-B44	H18	RICOH	ALR-C5502K-CHN	MP-C5502/841707	BK	31K	CHN	Ricoh MPC3002/MPC3502
PCB-B44	H18	RICOH	ALR-C5502C-CHN	MP-C5502/841710	C	22.5K		
PCB-B44	H18	RICOH	ALR-C5502M-CHN	MP-C5502/841709	M	22.5K		
PCB-B44	H18	RICOH	ALR-C5502Y-CHN	MP-C5502/841708	Y	22.5K		
PCB-B44	H18	RICOH	ALR-C5502K-EUR	MP-C5502/842020	BK	31K	EUR	
PCB-B44	H18	RICOH	ALR-C5502C-EUR	MP-C5502/842023	C	22.5K		
PCB-B44	H18	RICOH	ALR-C5502M-EUR	MP-C5502/842022	M	22.5K		
PCB-B44	H18	RICOH	ALR-C5502Y-EUR	MP-C5502/842021	Y	22.5K		
PCB-B44	H18	RICOH	ALR-C5502K-NA	MP-C5502/841751	BK	31K	NA	
PCB-B44	H18	RICOH	ALR-C5502C-NA	MP-C5502/841754	C	22.5K		
PCB-B44	H18	RICOH	ALR-C5502M-NA	MP-C5502/841753	M	22.5K		
PCB-B44	H18	RICOH	ALR-C5502Y-NA	MP-C5502/841752	Y	22.5K		
PCB-B44	H18	RICOH	ALR-C8003K-NA	MP-C8003/842196	BK	47K	NA	Ricoh MP C8003/C6503
PCB-B44	H18	RICOH	ALR-C8003C-NA	MP-C8003/842199	C	26K		
PCB-B44	H18	RICOH	ALR-C8003M-NA	MP-C8003/842198	M	26K		
PCB-B44	H18	RICOH	ALR-C8003Y-NA	MP-C8003/842197	Y	26K		
PCB-B44	H18	RICOH	ALR-C8003K-JP	MP-C8003/600375	BK	47K	JP	
PCB-B44	H18	RICOH	ALR-C8003C-JP	MP-C8003/600377	C	26K		
PCB-B44	H18	RICOH	ALR-C8003M-JP	MP-C8003/600378	M	26K		
PCB-B44	H18	RICOH	ALR-C8003Y-JP	MP-C8003/600376	Y	26K		
PCB-B44	H18	RICOH	ALR-C5200K-NA	C5200/828422	BK	33K	NA	Ricoh Pro C5200S/Pro C5210S
PCB-B44	H18	RICOH	ALR-C5200C-NA	C5200/828425	C	24K		

OEM Chip Reset Operating Instruction



PCB-B44	H18	RICOH	ALR-C5200M-NA	C5200/828424	M	24K	JP	
PCB-B44	H18	RICOH	ALR-C5200Y-NA	C5200/828423	Y	24K		
PCB-B44	H18	RICOH	ALR-C5200K-JP	C5200/600379	BK	33K		
PCB-B44	H18	RICOH	ALR-C5200C-JP	C5200/600382	C	24K		
PCB-B44	H18	RICOH	ALR-C5200M-JP	C5200/600381	M	24K		
PCB-B44	H18	RICOH	ALR-C5200Y-JP	C5200/600380	Y	24K		
PCB-B44	H19	RICOH	UNKNOWN	RST-Ricoh-3502				Ricoh Aficio MPC305spf/C306/ C406/C307/C407spf/C1803/ C2003/C2503/C2004/C2504/ C3002/C3003/C3502/C3503/ C3004/C3504/C4502/C4503/ C4504/C5502/C5503/C5504/ C6003/C6004/C6502sp/C6503/ C8002sp/C8003/SP C830/830M/ C831/831M/C841/a1/C841M/a1/ C840/a1/C840M/a1/C840DN/C84 2DN/Pro C5100S/C5110S/ C5200S/C5210S

"Apex" herein refers to Apex Microelectronics Co., Ltd. The information contained herein is subject to change without prior notification. Apex shall not be liable for technical or editorial errors or omissions contained herein. Photographed products may not always match the description.

© 2019 APEX MICROELECTRONICS CO., LTD. ALL RIGHTS RESERVED.
All brand names & trademarks are properties of other respective holders and used for descriptive purposes only.